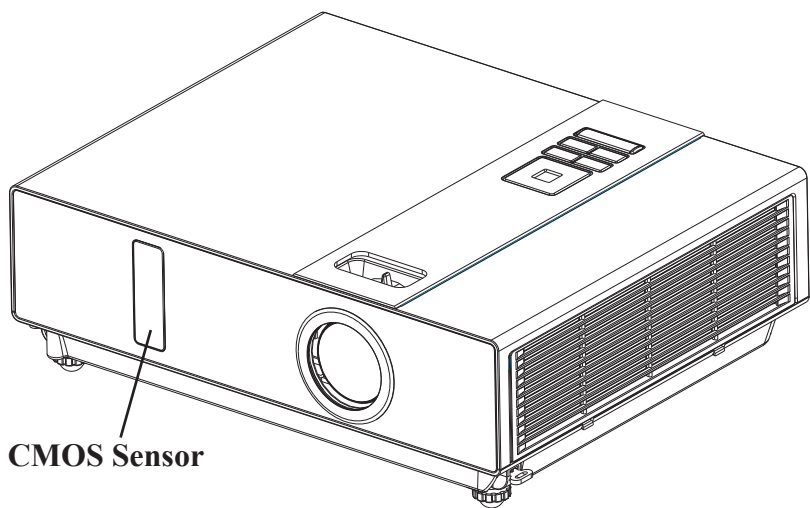


INTERACTIVE PROJECTOR



Interactive Projector Packing List.....i
Accessories Introduction.....ii
Icon Function Introduction.....iv
Installation Guide for Window OS..... 1
Installation Guide for Mac OS..... 9
Troubleshooting..... 14

Interactive Projector Packing List

Check-list of your accessories

List below is the accessory of the interactive projector. Please check. If there is any item missing, contact your dealer.

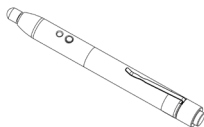
1. Accessory Bag



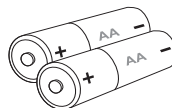
2. Pointer



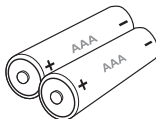
3. Light Pen



4. Batteries (AA)



5. Batteries (AAA)

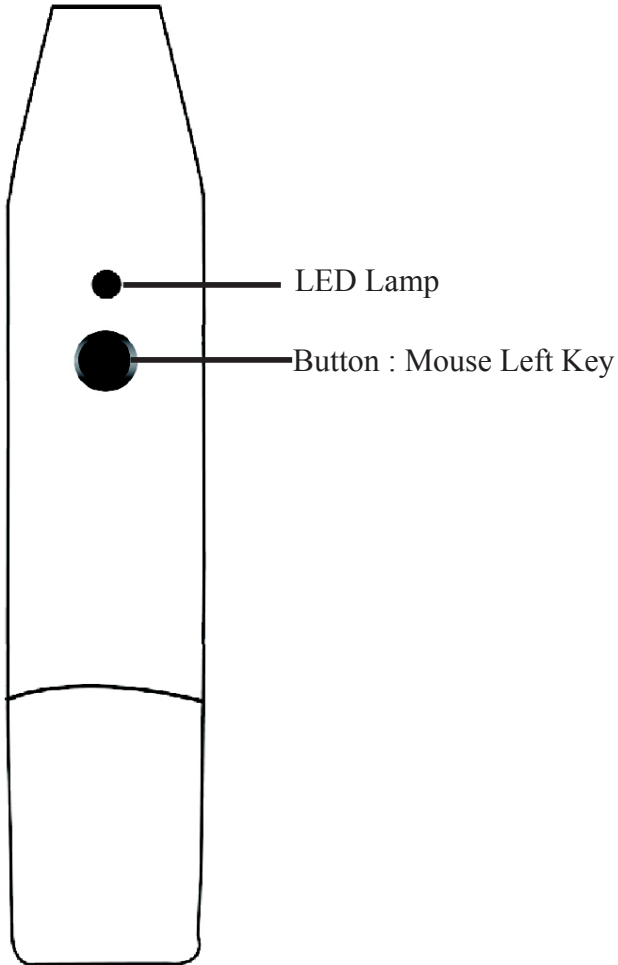


6. Hanging String



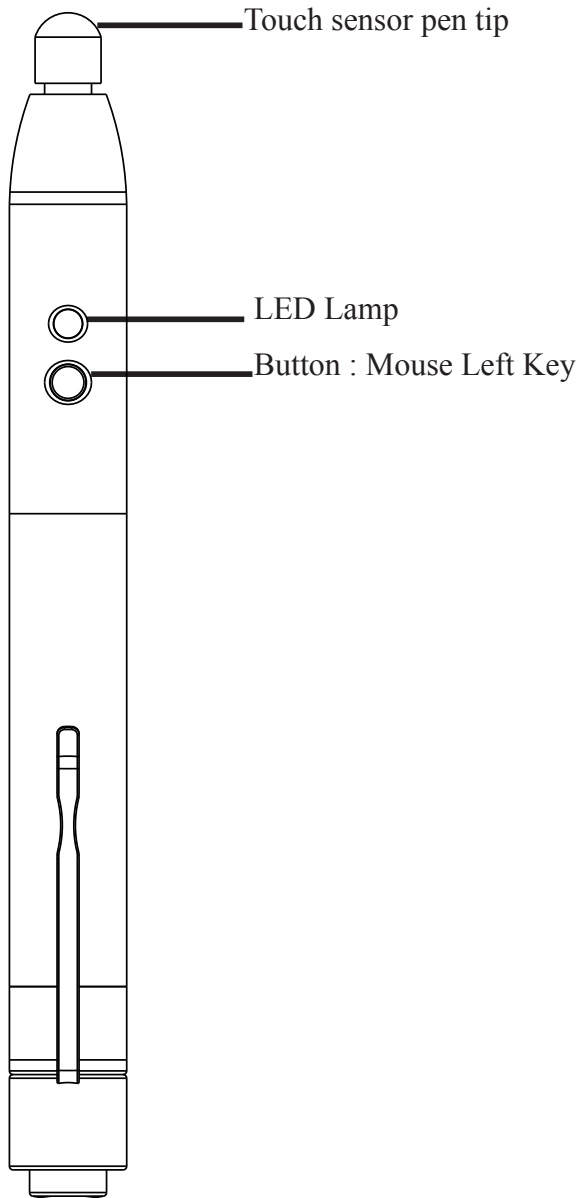
Accessories Introduction

Function Key on the "Pointer"



Accessories Introduction

Function Key on the "Light Pen"



Icon Function Introduction

Icon bar

Icon bar position

Use "Pointer" or "Light Pen" to push this button to position icon bar on right or left side of screen.

Mouse

Choose this key to change to computer mouse function.

Pen

Use Pointer or pen to draw or write.

Eraser

To erase drawing stepwise.

Fineness of pen

To select the fineness of pen.

Color of pen

To select the color of pen.

Eraser all

To erase drawings on the screen all at once.

Save files

To save the current page into file in computer.

Redraw

To recall the previous drawing (or erasing) you've made.

Virtual keyboard

To open virtual keyboard.



Installation Guide for Window OS

1. System Requirements

To ensure the interactive function work properly, please check your computer to see if it meets the following conditions.

System Requirements	
OS Required	Microsoft Window 2000(SP4)/XP(SP2)/Vista
Processor Type	Intel Pentium IV or above
RAM	256 MB above
Min. Free disk space	30 MB
	CD-ROM Driver & USB 2.0 port available

2. LightPen Software Installation

Step 1: Insert the Installation Disc to the CD-ROM or DVD-ROM player.

Step 2: Copy LightPen folder to hard disk.

(Simply execute LightPen.exe in LightPen folder.)

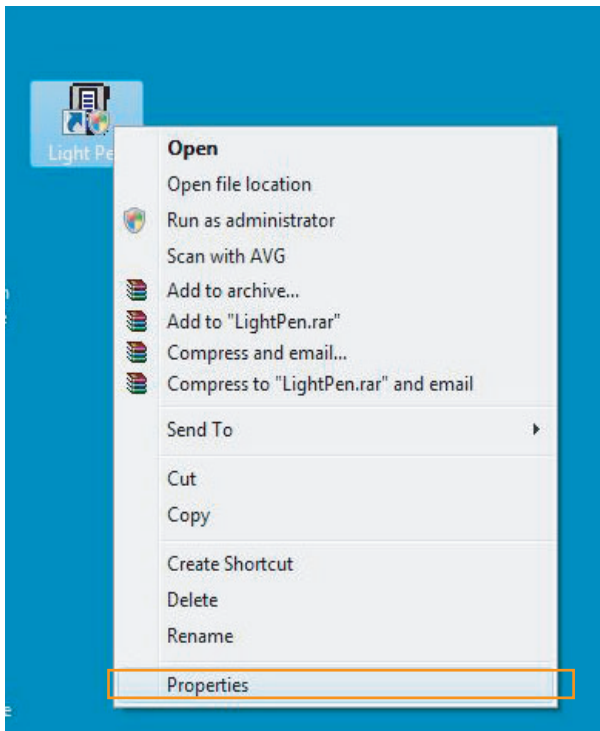
Note: For Vista, you need to do the following (a) (b) set-up.

Installation Guide for Window OS

Note!

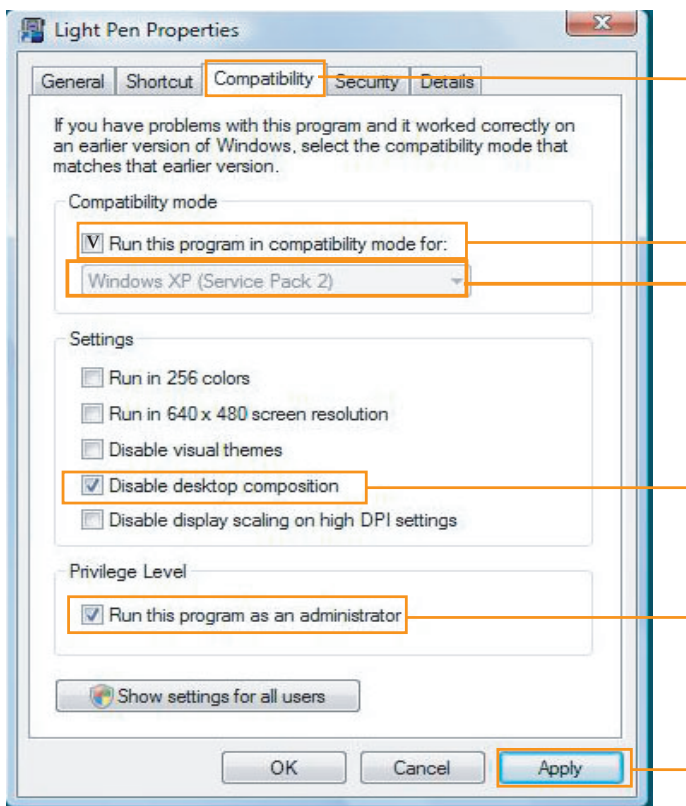
Notice for Vista System Setting:(Don't need to set up in XP)

- (a) Click mouse right key on LightPen execution file in "LightPen" folder, then click mouse left key to select "Properties".



Installation Guide for Window OS

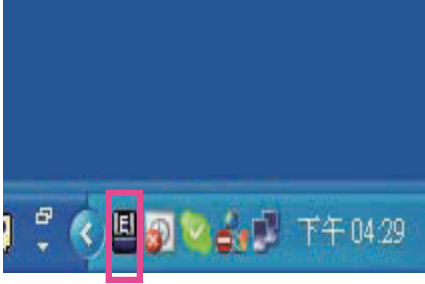
- (b) Select sheet "Compatibility" and mark "Run this program in compatibility mode for: Windows XP(Service Pack 2)", "Disable desktop composition" and "Run this program as an administrator". Then select "Apply" .



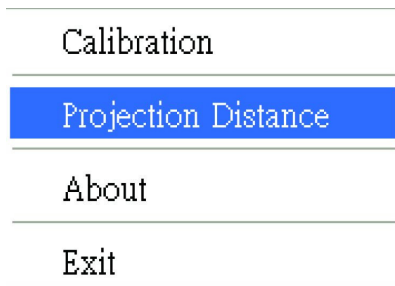
Installation Guide for Window OS

3. Select Distance

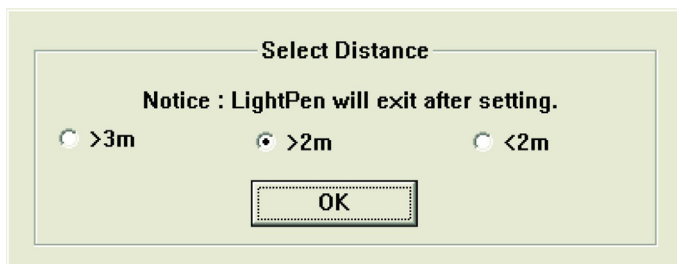
Step 1: Click mouse right key on "LightPen" in the menu bar.



Step 2: Click mouse right key to set projection distance.



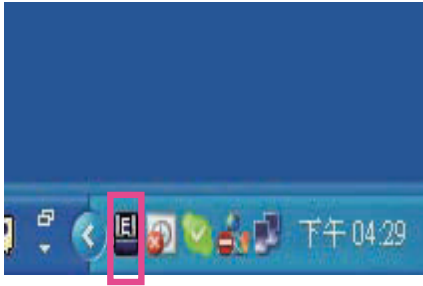
Step 3: Choose the projection distance from pop-up menu (>3m,>2m,<2m).



Installation Guide for Window OS

4. Calibration

Step 1: Click "LightPen".



Step 2: Select "LightPen" from Tray Icon, then click mouse right key and select "Calibration".

Calibration
Projection Distance
About
Exit

Installation Guide for Window OS

4. Calibration

Step 3: Push the button on "Pointer" or "Light Pen" (pending on the screen size), and point to the "Center of green cross target" from upper-left of screen to lower-right of screen orderly. There are nine targets totally. When there is no more green target on the screen, it means you have completed the calibration procedure. To ensure accurate positioning, keep the angle of "Pointer" or "Light Pen" as consistent as possible during calibration.



Installation Guide for Window OS

5. How To Use

How to operate "Mouse right key" function?

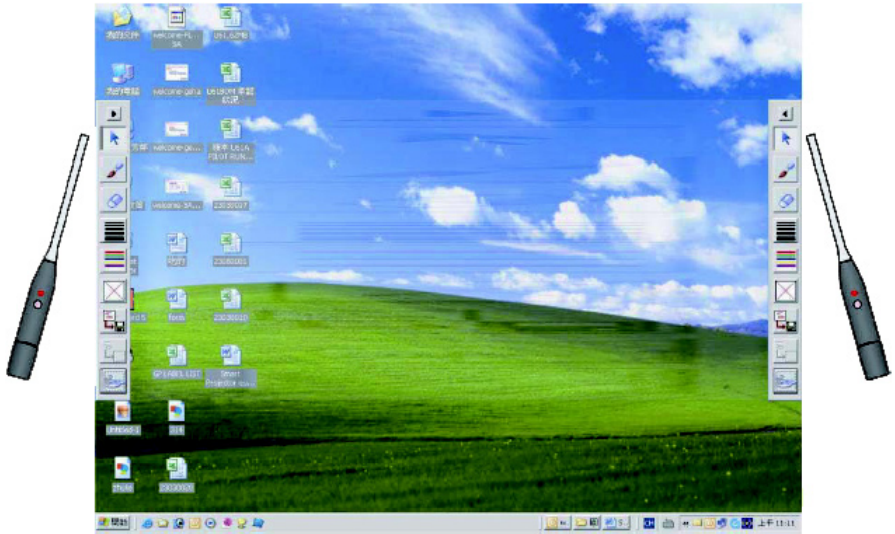
→Point to top or lower edge slightly outside the projected image, then press the button on "Pointer" or "Light Pen".



Installation Guide for Window OS

5. How To Use

There is another quick way to change the position of icon bar or hide it. Point to left or right edge slightly outside the projected image, then push the button on "Pointer" or "Light Pen".



Installation Guide for Mac OS

1. System Requirements

To ensure the interactive function work properly, please check your computer to see if it meets the following conditions.

System Requirements	
OS Required	Mac OS X v10.4.11- v10.5 or above
Processor Type	Intel processor or Power PC
RAM	512 MB RAM or above
Hard Disk	At least 10 MB of hard disk space
Media Device	At least 4x CD-ROM or DVD-ROM
	At least USB 2.0

2. LightPen Software Installation

Step 1: Insert the Installation Disc to the CD-ROM or DVD-ROM player.

Step 2: Copy LightPen execution file to hard disk.

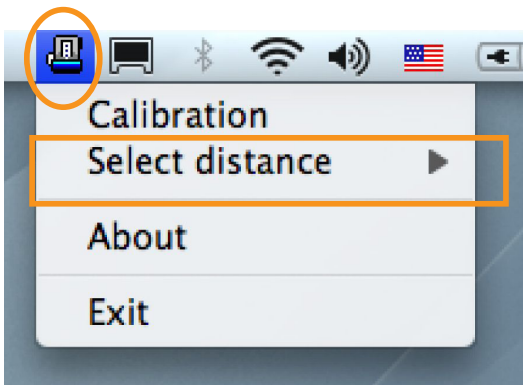
Installation Guide for Mac OS

3. Select Distance

Step 1: Select "LightPen" from menu bar.

Step 2: Click mouse key on Projection Distance.

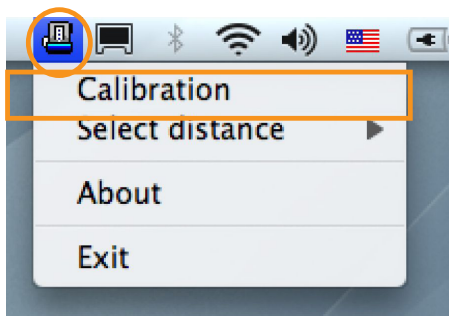
Step 3: Choosing the projection distance from pop-up menu
($>3m$, $>2m$, $<2m$).



Installation Guide for Mac OS

4. Calibration

Step 1: Select "LightPen" from menu bar then click mouse key for calibration.



Step 2: Push the button on "Pointer" or "Light Pen" (pending on the screen size), and point to the "Center of green cross target" from upper-left of screen to lower-right of screen orderly. There are nine targets totally. When there is no more green target on the screen, it means you have completed the calibration procedure. To ensure accurate positioning, keep the angle of "Pointer" or "Light Pen" as consistent as possible during calibration.



Installation Guide for Mac OS

5. How To Use

How to operate function of "Ctrl + Click (Mouse right key)"?

→Point to top or lower edge slight outside the projected image, then push the button on "Pointer" or "Light Pen".



Installation Guide for Mac OS

5. How To Use

There is another quick way to change the position of icon bar or hide it.
→Point to left or right edge slightly outside the projected image, then push the button on "Pointer" or "Light Pen".



Troubleshooting

1. Q: Why you can't execute the LightPen program?

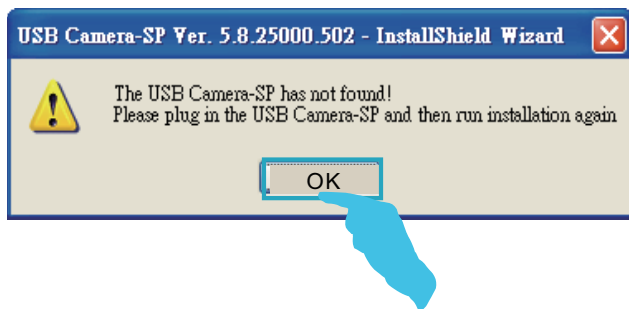
A: You might need to log in as “administrator” to be able to install program to your computer. Consult with your IT engineers to help you on this regard.

2. Q: Why does it show “No LightPen found”?

A: Reasons for this might be:

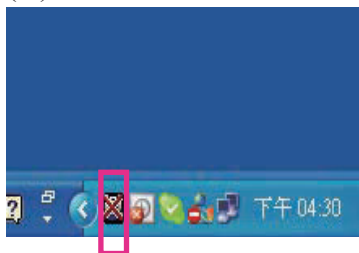
(1)USB cable is not well connected to computer or projector. Please check and make sure the cable is well connected between computer and projector.

(1-1)If the following image shows, please pug USB cable and run installation again.

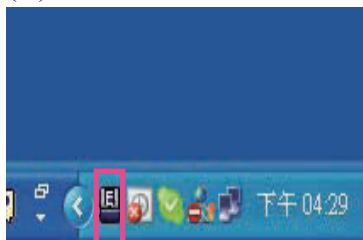


(1-2)When in Windows OS, if the following image (A) pops up, it indicates that USB cable is not connected or the USB port is out of order. If icon is shown as (B), it means you can use LightPen program.

(A)



(B)



Troubleshooting

When in MAC OS, if the following image (C) pops up, it indicates that USB cable is not connected or the USB port is out of order. If icon is shown as (D), it means you can use LightPen program.

(C)



(D)



* Some Anti-virus programs will disable the USB port. Please make sure the USB port is not disabled.

- (2) The installation of LightPen driver is not complete. Please remove the LightPen driver and re-install.
- (3) The length of USB cable is too long. The USB cable should be shorter than 1.5M. If you need longer USB cable, please contact your dealer for proper USB extension cable.
- (4) USB port on computer malfunctions.

Please check if the USB port is functioning or not. If not, please consult with IT engineer.

Some notebook computers will disable USB ports when the battery is low. Please use AC power as possible as you can. Some notebook computers do not provide standard 500mA to the USB port or the USB converter is not working properly. In such case, please use our standard USB cable.

3. Q: Why you cannot execute calibration on the green cross target?

A: (1) Please check if "Pointer" or "Light Pen" works:

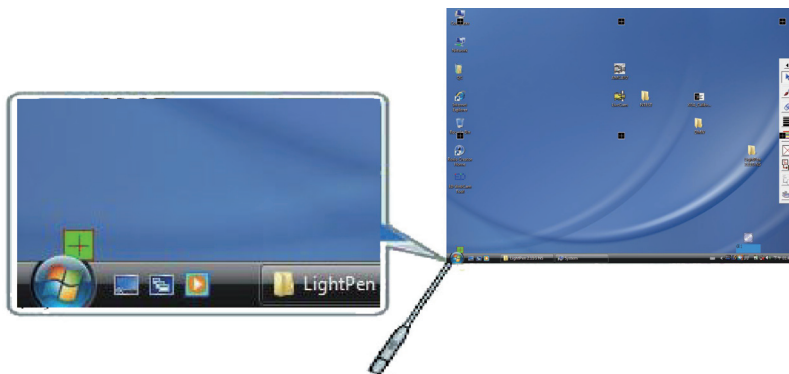
- (1-1) Please check if "Pointer" or "Pen" battery is low or battery cap is loose.
- (1-2) When using "Pointer" or "Light Pen", avoid blocking the "Pointer", "Light Pen" and the CMOS sensor in front of the projector. If the sensor cannot detect signal sending from "Pointer" or "Light Pen", "Pointer" or "Light Pen" cannot

Troubleshooting

- (2)The ambient may be too strong. Avoid direct lighting on the projected image or CMOS sensor.

Strong ambient light is usually caused by the following:

- (2-1) Sunlight shines directly on the screen.
- (2-2)Light source working close to the sensor.
- (3)In Window Vista system, one of green cross targets may be hidden by "Start" square of computer/notebook computer. Please point to the position as shown for calibration.



4. Q: Why the cursor is not at the position that "Pointer" or "Light Pen" pointed to?

A: Possible reasons for this are:

- (1) The system is not calibrated well. Try to point to the "center" of green cross target when you run calibration.
- (2) The position of the projector, screen or projection size has been changed.
- (3) The image resolution has been changed.

Running the calibration procedure again will solve the problem.

Troubleshooting

5. Q: Why is the cursor jumping?

A: This may be caused by strong ambient light interference. Try to avoid strong ambient light interference, especially strong sun light directly projected on the screen. (Please refer to the Question 3.)

6. Q: Why is the LightPen not working after the computer wakes up from standby?

A: In some cases, if the computer goes into standby mode, the computer will shot the USB port. In such case, please wake up computer, unplug and insert the USB cable again. (Please refer to the Question 2.)

Note:

1. Always use alkaline batteries for the "Pointer" and "Light Pen".